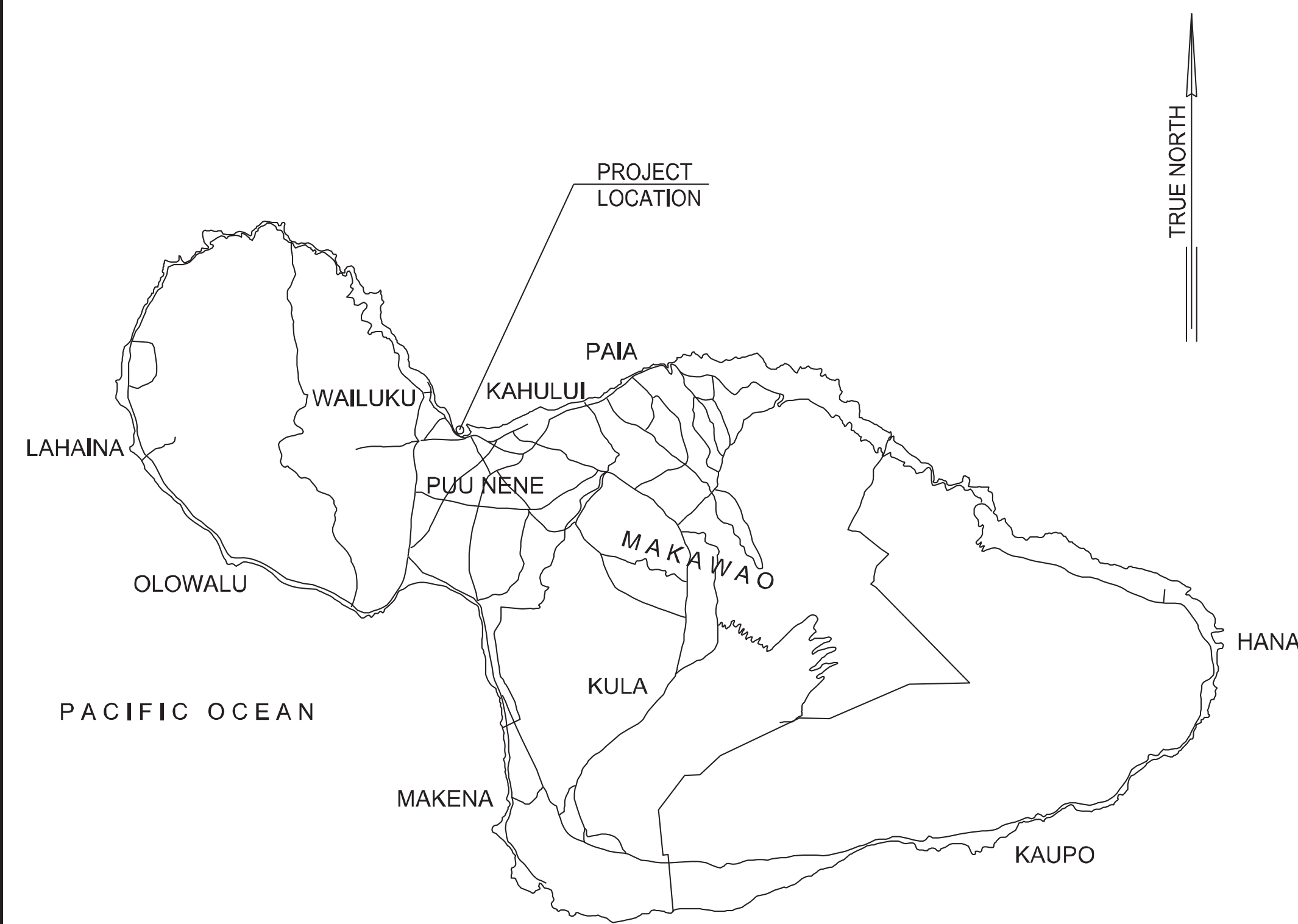


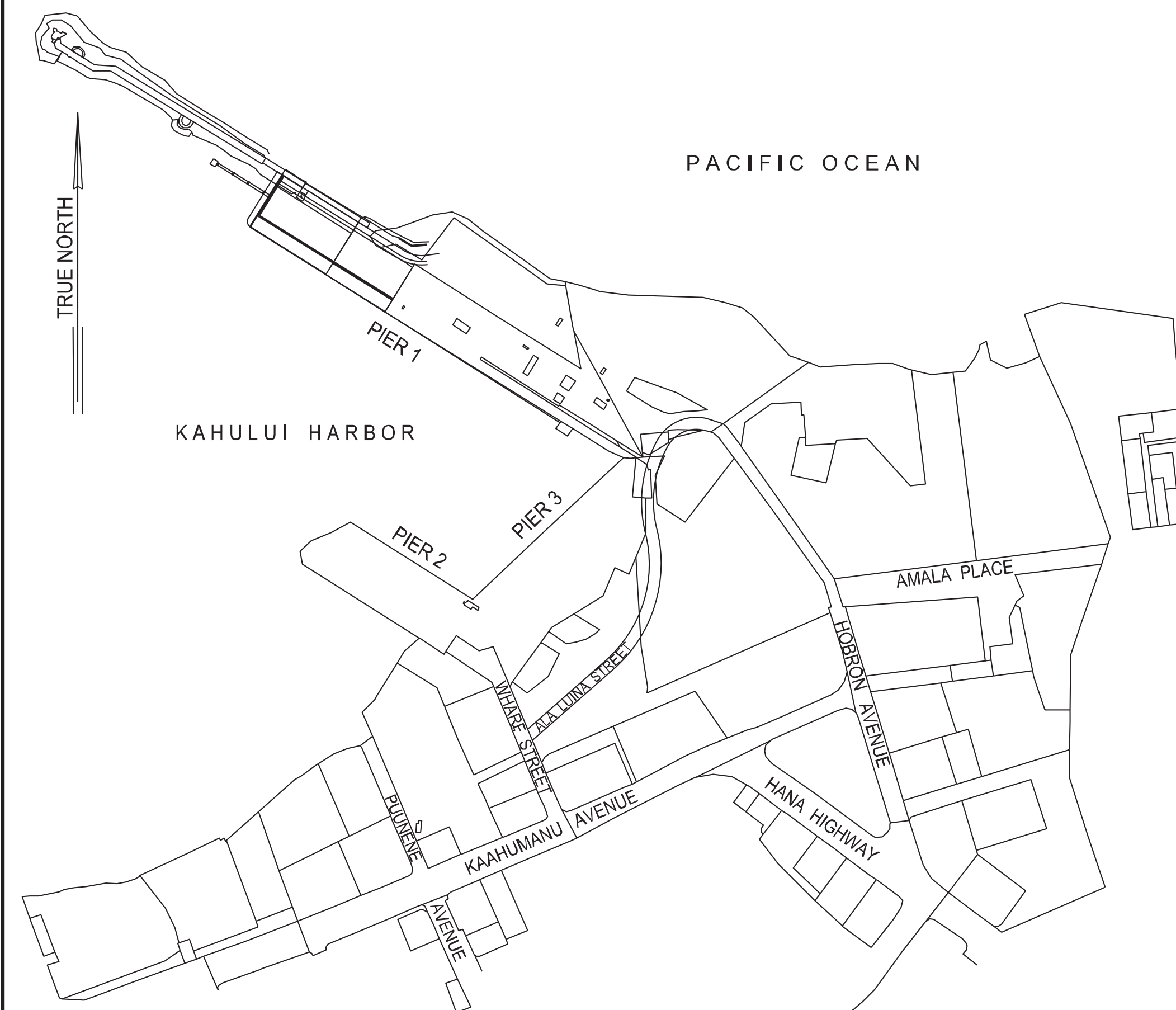
FENCE AND GATE REPAIRS AT VARIOUS LOCATIONS, KAHULUI HARBOR, MAUI, HAWAII

STATE OF HAWAII
DEPARTMENT OF TRANSPORTATION
HARBORS

S30221R



LOCATION MAP
NOT TO SCALE



VICINITY MAP
NOT TO SCALE

DEPARTMENT OF TRANSPORTATION
STATE OF HAWAII

APPROVED BY:

FOR 
DIRECTOR OF TRANSPORTATION

Feb 12, 2024

DATE

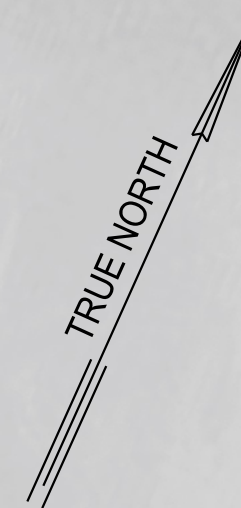
SHEET

1

1 OF 4 SHTS.



PACIFIC OCEAN



LEGEND

- CHAIN LINK GATE NUMBER
- CHAIN LINK GATE
- CHAIN LINK FENCE
- CHAIN LINK GATE WIDTH (VARIES)

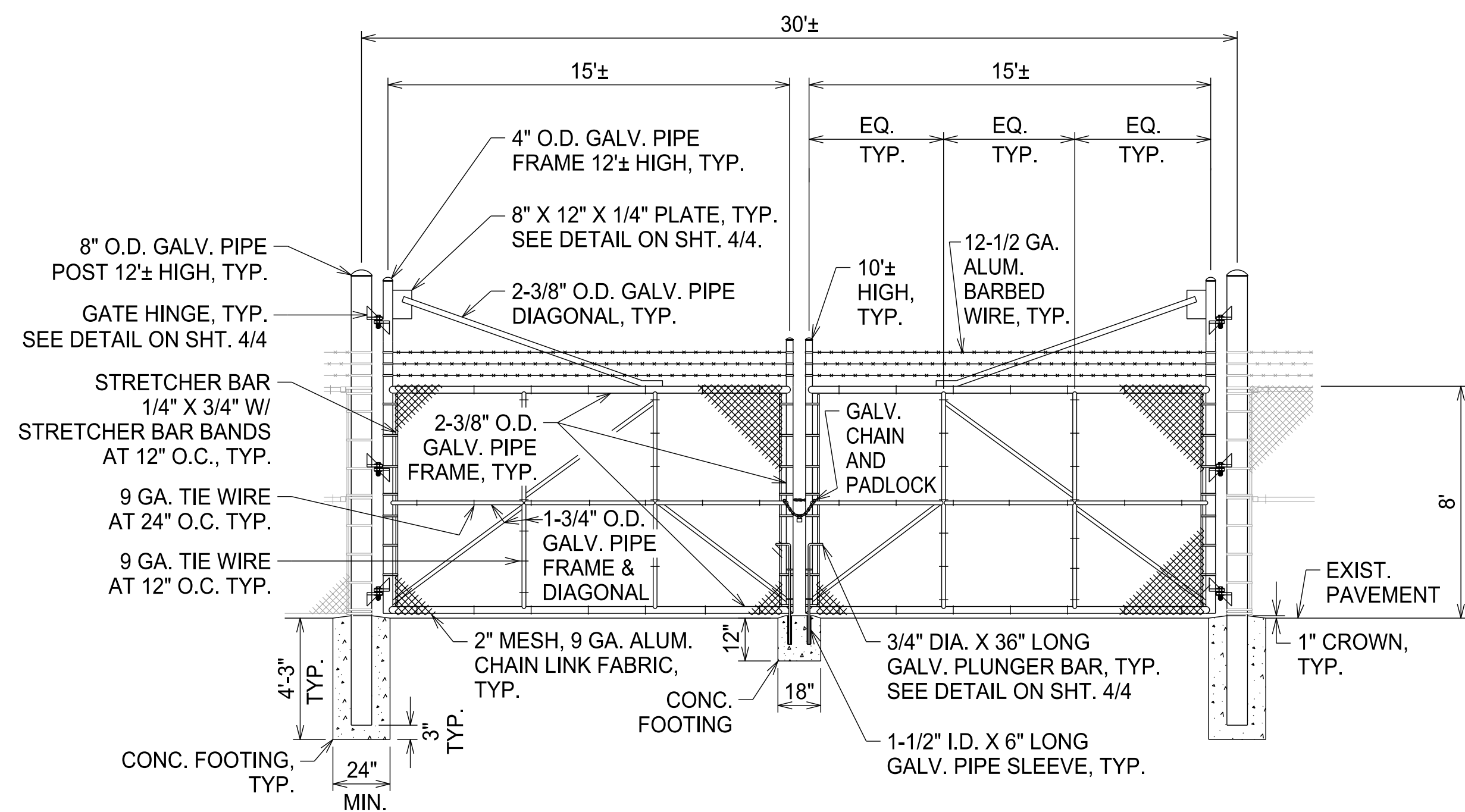
GENERAL NOTES

1. THE FENCES AND GATES TO BE REPLACED AT VARIOUS LOCATIONS ARE NOT SHOWN ON THE CONTRACT PLANS. THE LIMITS OF THE WORK SHALL BE DETERMINED BY THE MAUI DISTRICT MANAGER AND THE CONSTRUCTION ENGINEER BASED UPON ACTUAL DETERMINATION OF WHICH FENCES AND GATES ARE TO BE REPLACED.
2. THE QUANTITY OF REPLACEMENT AND INSTALLATION OF FENCES AND GATES SHOWN IN THE PROPOSAL SCHEDULE IS AN APPROXIMATION AND FOR BIDDING PURPOSES ONLY.
3. THE CONSTRUCTION ENGINEER WILL NOTIFY THE CONTRACTOR WHEN SUCH WORK WILL BE DONE. THE CONSTRUCTION ENGINEER, CONTRACTOR, AND TENANT WHEN APPROPRIATE, WILL MEET AT THE JOB SITE TO DETERMINE THE FENCES AND GATES TO BE REPLACED.
4. THE EXISTING FENCE AND GATE MATERIALS REQUIRING REMOVAL SHALL NOT BE STORED BUT HAULED AWAY DAILY FROM THE JOB SITE AND DISPOSED OF IN A LAWFUL MANNER BY THE CONTRACTOR.
5. THE CONTRACTOR SHALL COMPLY WITH THE CLEAN WATER ACT AND THE STATE OF HAWAII DEPARTMENT OF TRANSPORTATION HARBORS DIVISION STORMWATER MANAGEMENT PROGRAM. NO POLLUTANTS ARE ALLOWED TO BE DISCHARGED DIRECTLY OR INDIRECTLY THROUGH THE HARBORS SMALL MS4 OR OTHER POTENTIAL PATHWAYS INTO ADJACENT HARBOR WATER.
6. THE CONTRACTOR SHALL SUBMIT A SITE-SPECIFIC BEST MANAGEMENT PRACTICE PLAN AND HEALTH AND SAFETY PLAN TO THE HARBORS ENGINEERING BRANCH PRIOR TO THE START OF ANY CONSTRUCTION WORK. THE SITE-SPECIFIC BMP PLAN SHALL COMPLY WITH ARTICLE XIV – TEMPORARY WATER POLLUTION, DUST, AND EROSION CONTROL IN THE SPECIFICATIONS AND PROPOSAL.
7. IN CASE OF RELEASE OF HAZARDOUS SUBSTANCE, OIL, OR ENCOUNTER OF CONTAMINATED OIL, THE CONTRACTOR SHALL NOTIFY APPROPRIATE FACILITY PERSONNEL, EMERGENCY RESPONSE AGENCIES, AND REGULATORY AGENCIES FOLLOWING NOTIFICATION PROCEDURES, AND SHALL NOTIFY HARBORS CONSTRUCTION ENGINEER IMMEDIATELY (I.E. WITHIN 24 HOURS). CONTACT INFORMATION MUST BE IN LOCATIONS THAT ARE READILY ACCESSIBLE AND AVAILABLE.
8. SEE SPECIFICATIONS FOR ADDITIONAL INFORMATION.

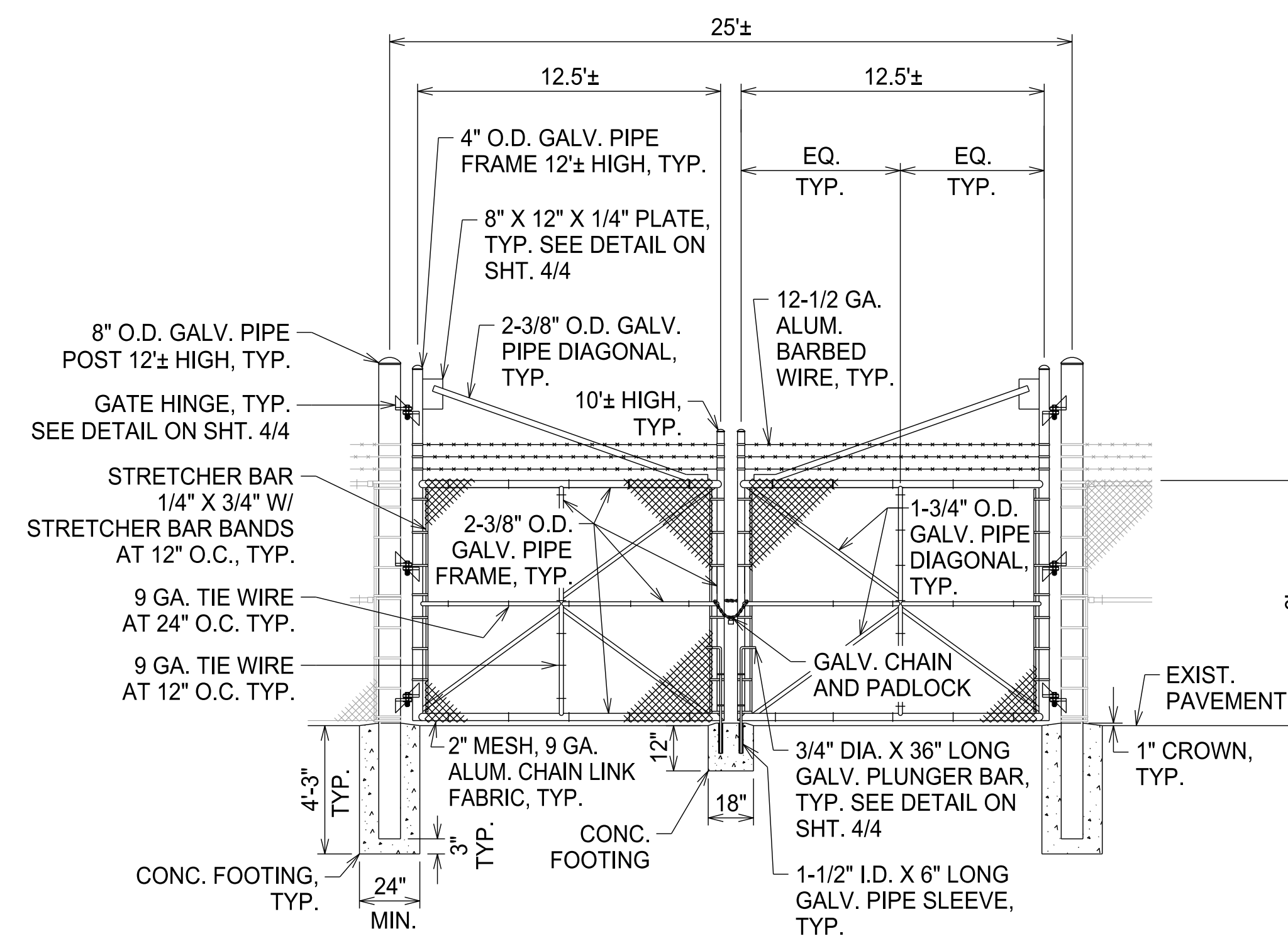
SITE PLAN - KAHULUI HARBOR

SCALE: 1" = 150'

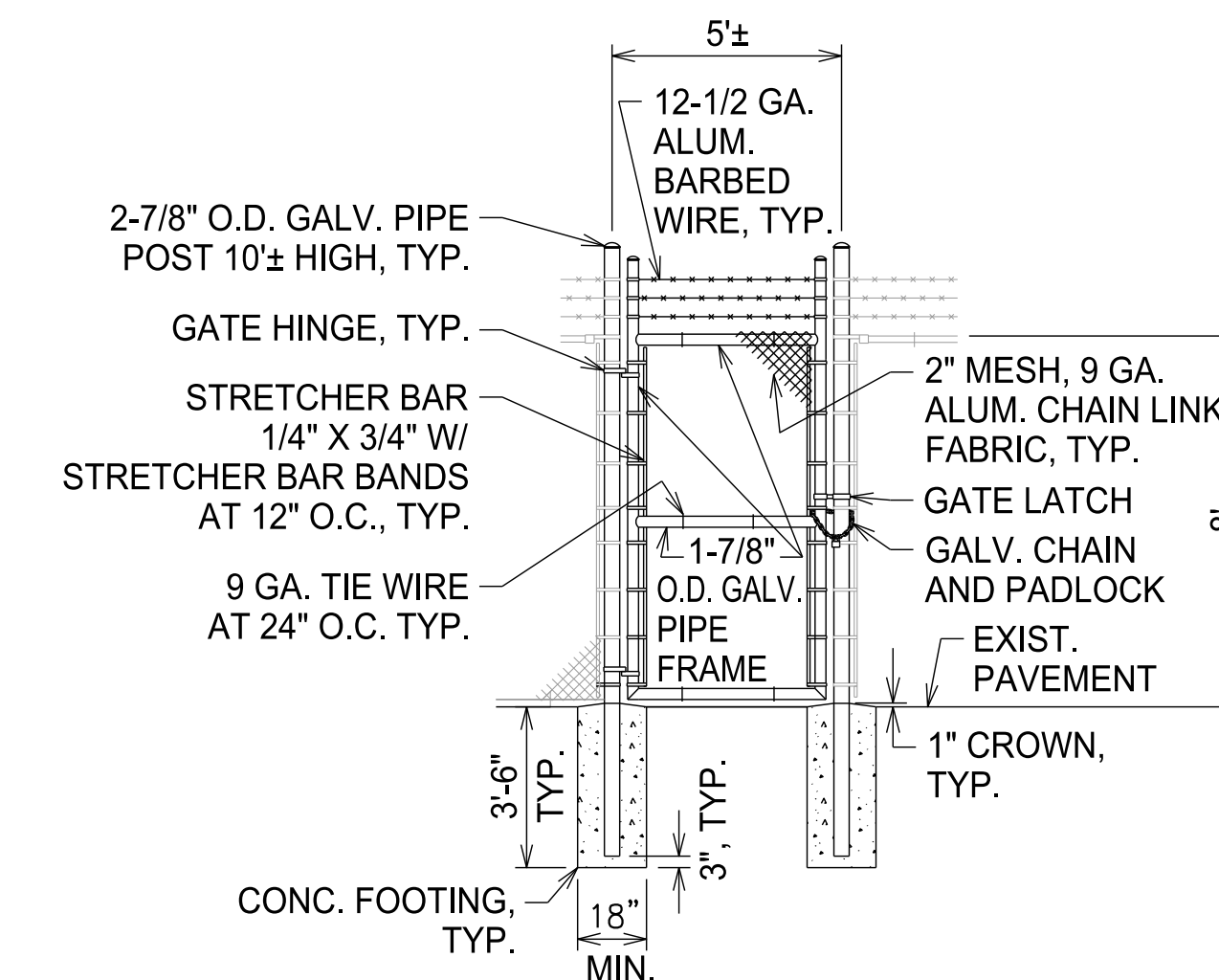
REV	DATE	DESCRIPTION	BY	APPROVED
STATE OF HAWAII DEPARTMENT OF TRANSPORTATION HARBORS				
JOB TITLE FENCE AND GATE REPAIRS AT VARIOUS LOCATIONS, KAHULUI HARBOR MAUI, HAWAII				
SHEET TITLE SITE PLAN AND GENERAL NOTES				
DESIGNED BY:	EL			SHEET
DRAWN BY:	EL			2
CHECKED BY:	AF	JOB NUMBER		
DATE:	MAR 2024	S30221R		2 OF 4 SHTS.
SCALE:	AS SHOWN			



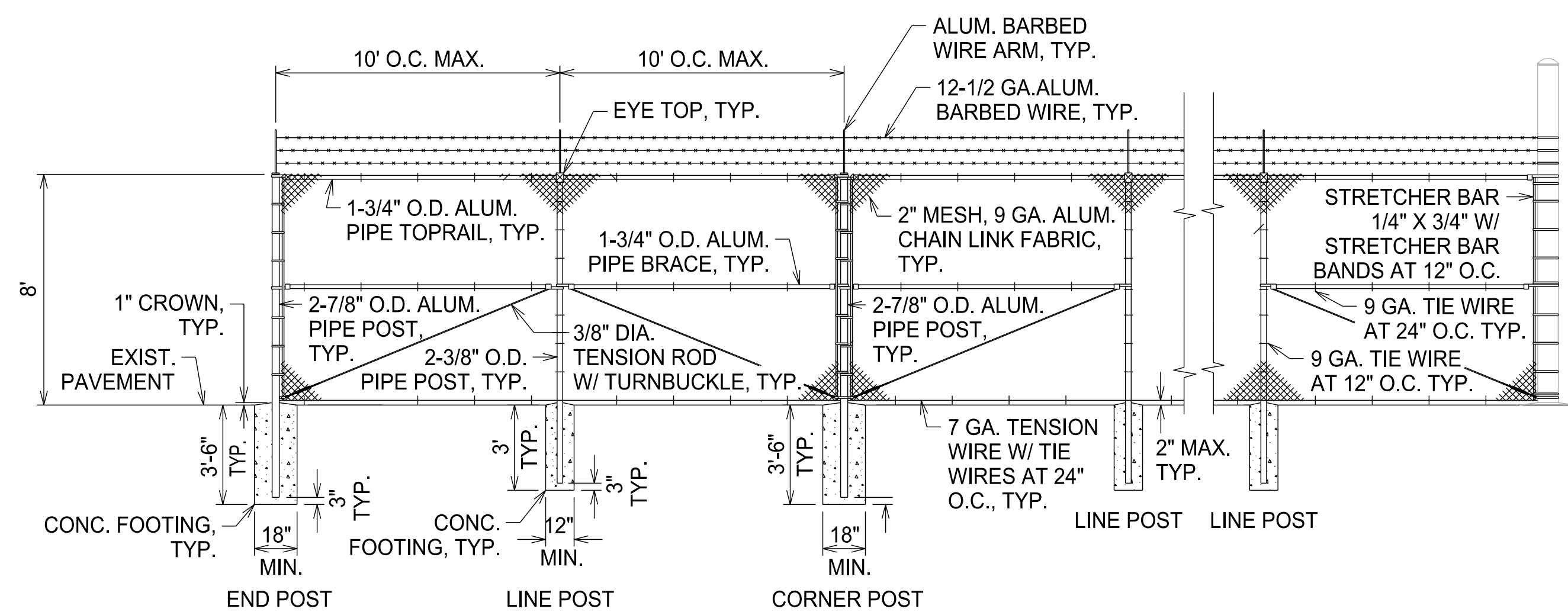
DETAIL - 30' DOUBLE SWING GATE
NOT TO SCALE



DETAIL - 25' DOUBLE SWING GATE
NOT TO SCALE

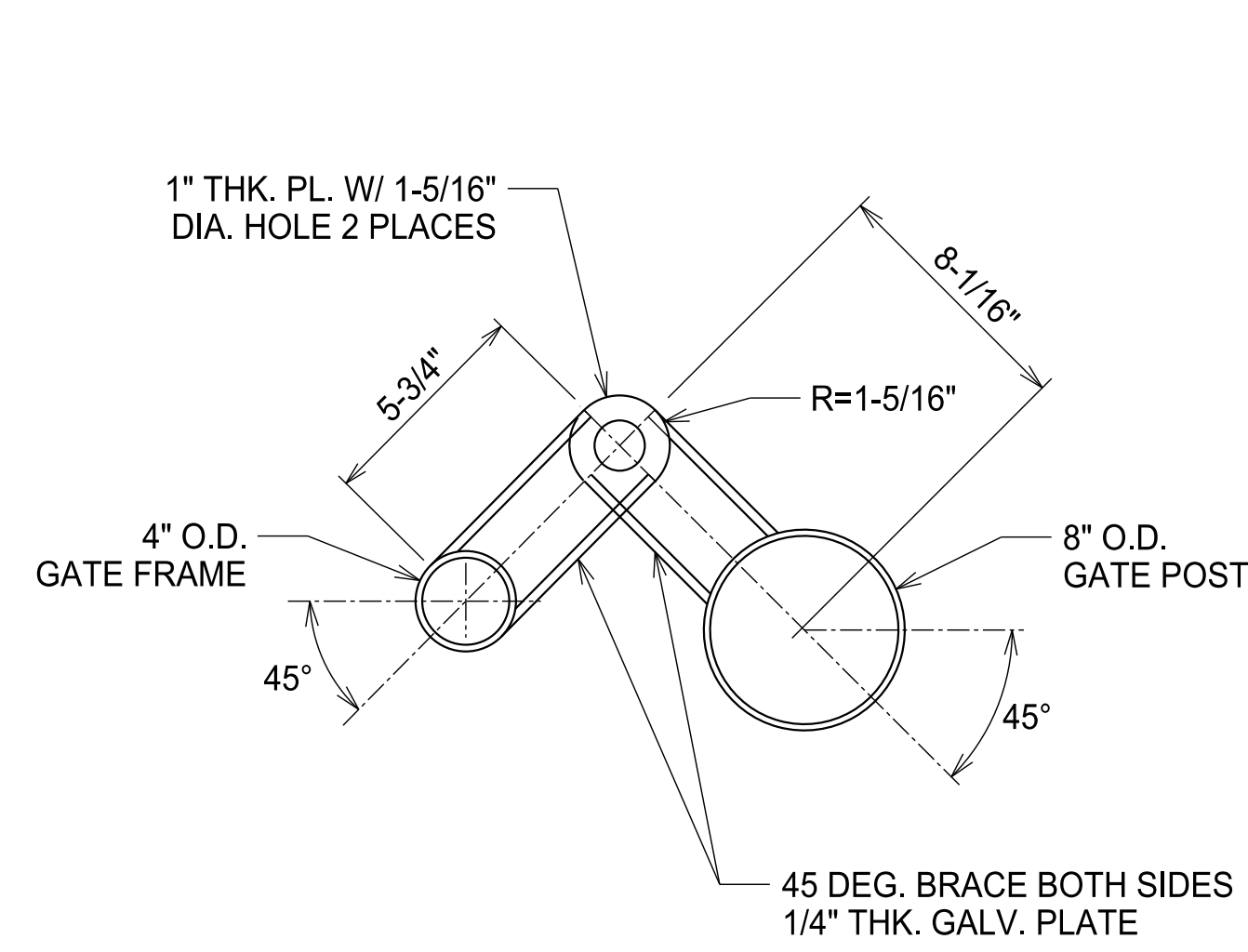


DETAIL - PEDESTRIAN GATE
NOT TO SCALE

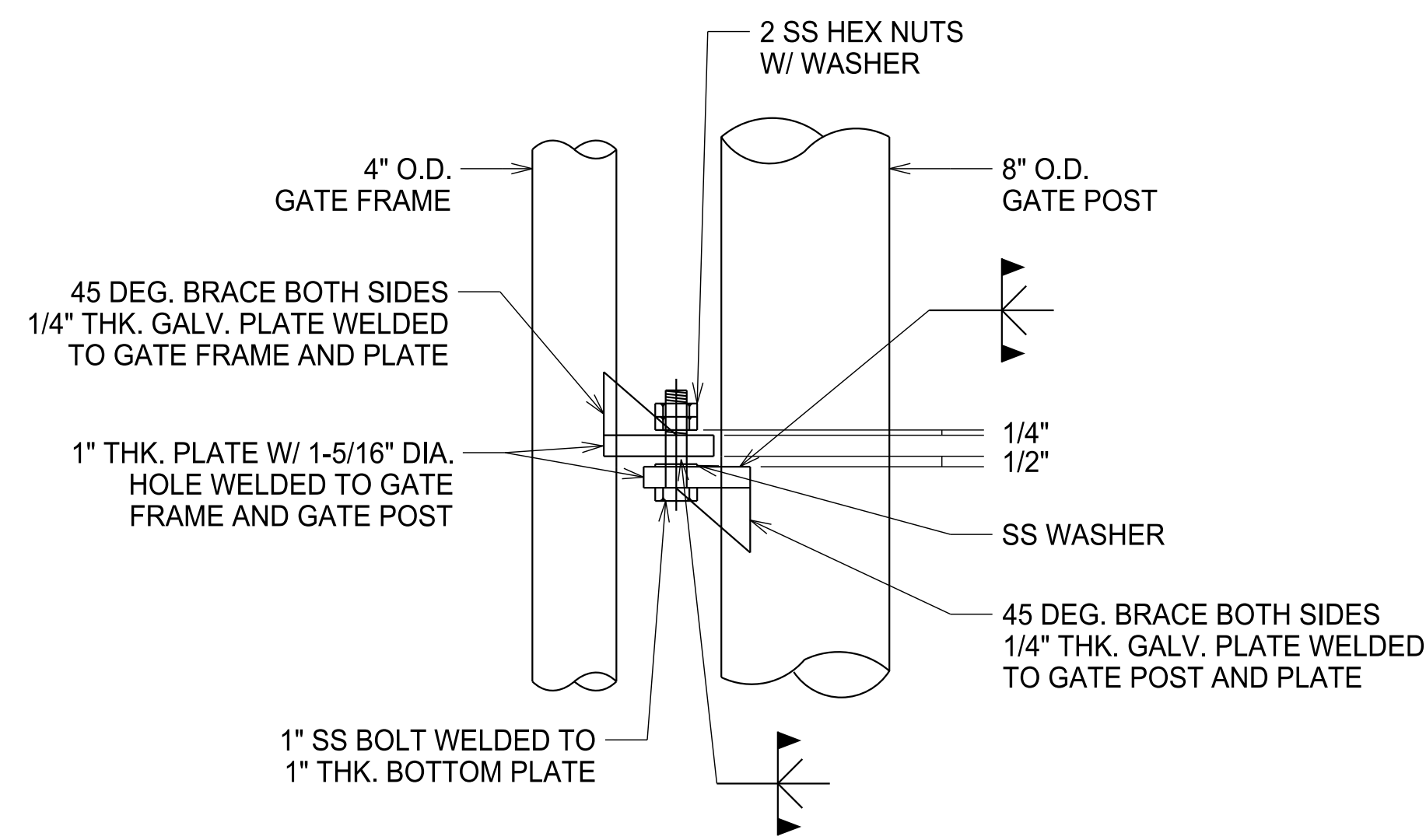


DETAIL - CHAIN LINK FENCE
NOT TO SCALE

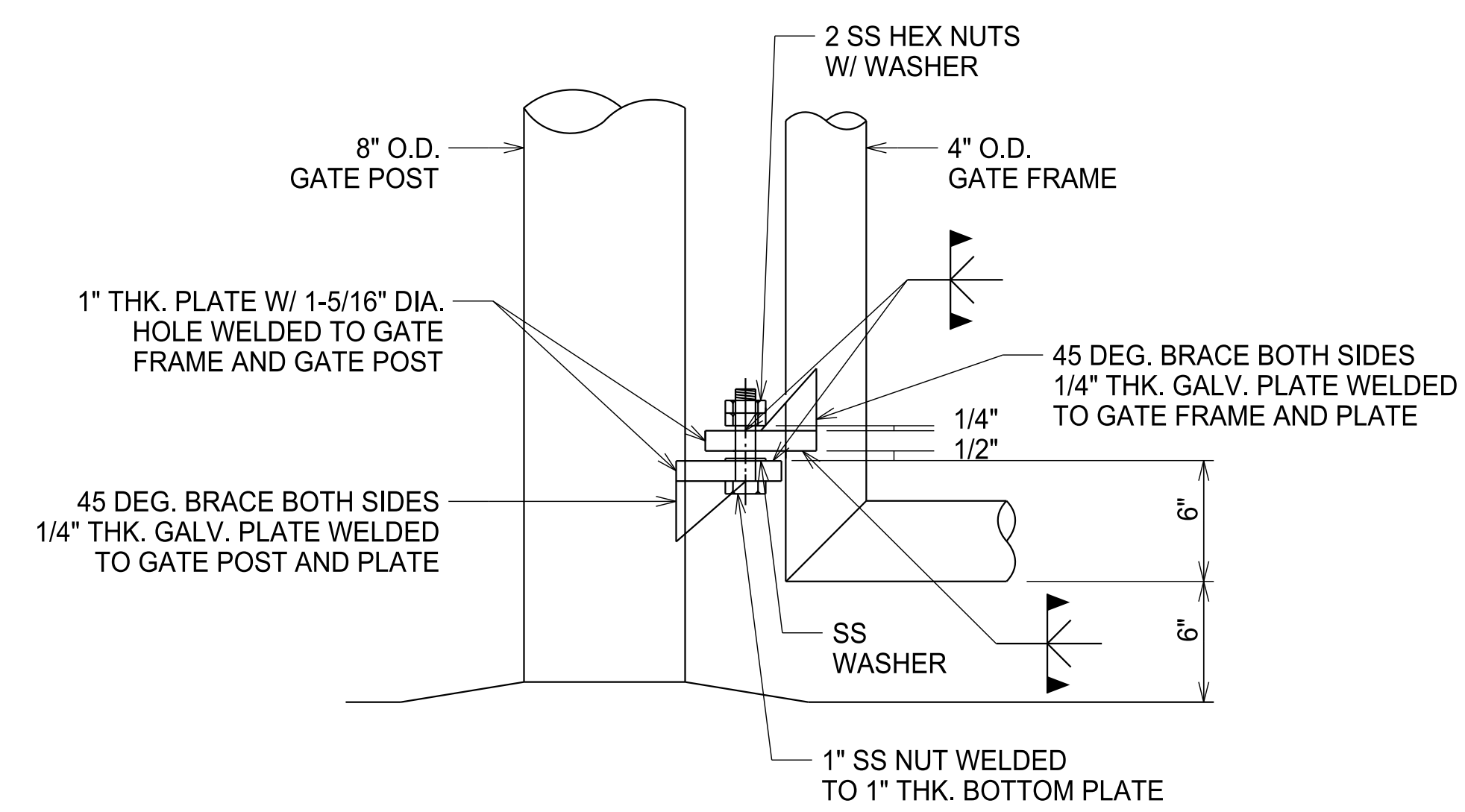
REV	DATE	DESCRIPTION	BY	APPROVED
STATE OF HAWAII DEPARTMENT OF TRANSPORTATION HARBORS				
JOB TITLE FENCE AND GATE REPAIRS AT VARIOUS LOCATIONS, KAHULUI HARBOR MAUI, HAWAII				
SHEET TITLE DETAILS				
DESIGNED BY: EL				SHEET
DRAWN BY: EL				3
CHECKED BY: AF	JOB NUMBER			
DATE: MAR 2024	S30221R			
SCALE: AS SHOWN				3 OF 4 SHTS.



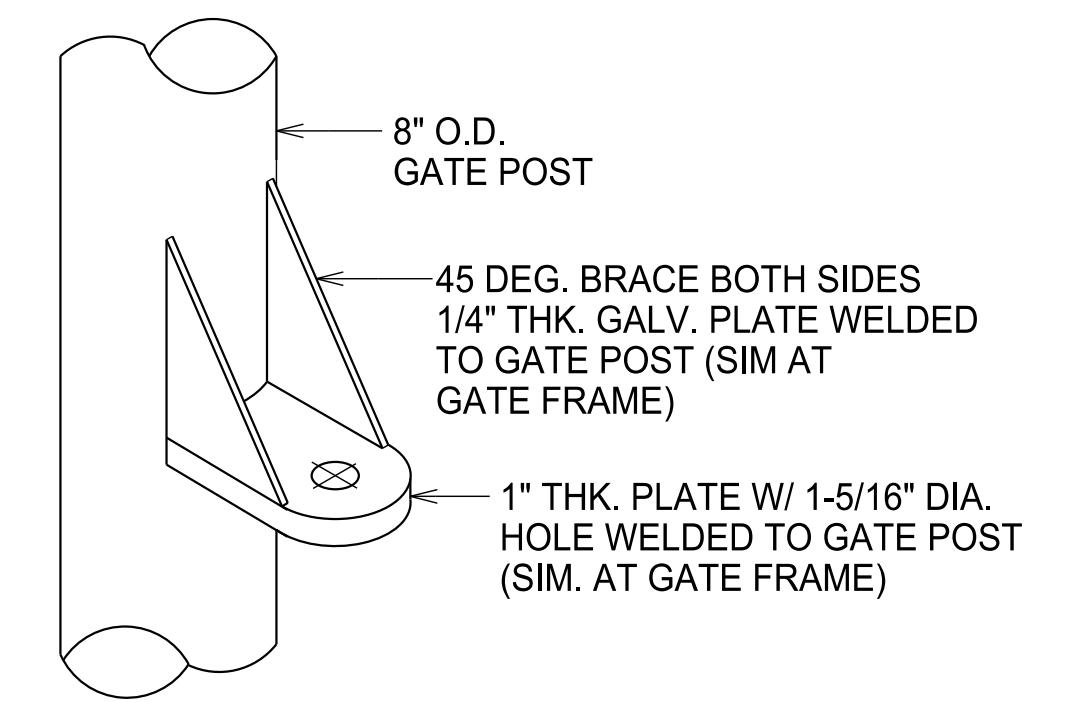
PLAN



TOP/MIDDLE HINGE



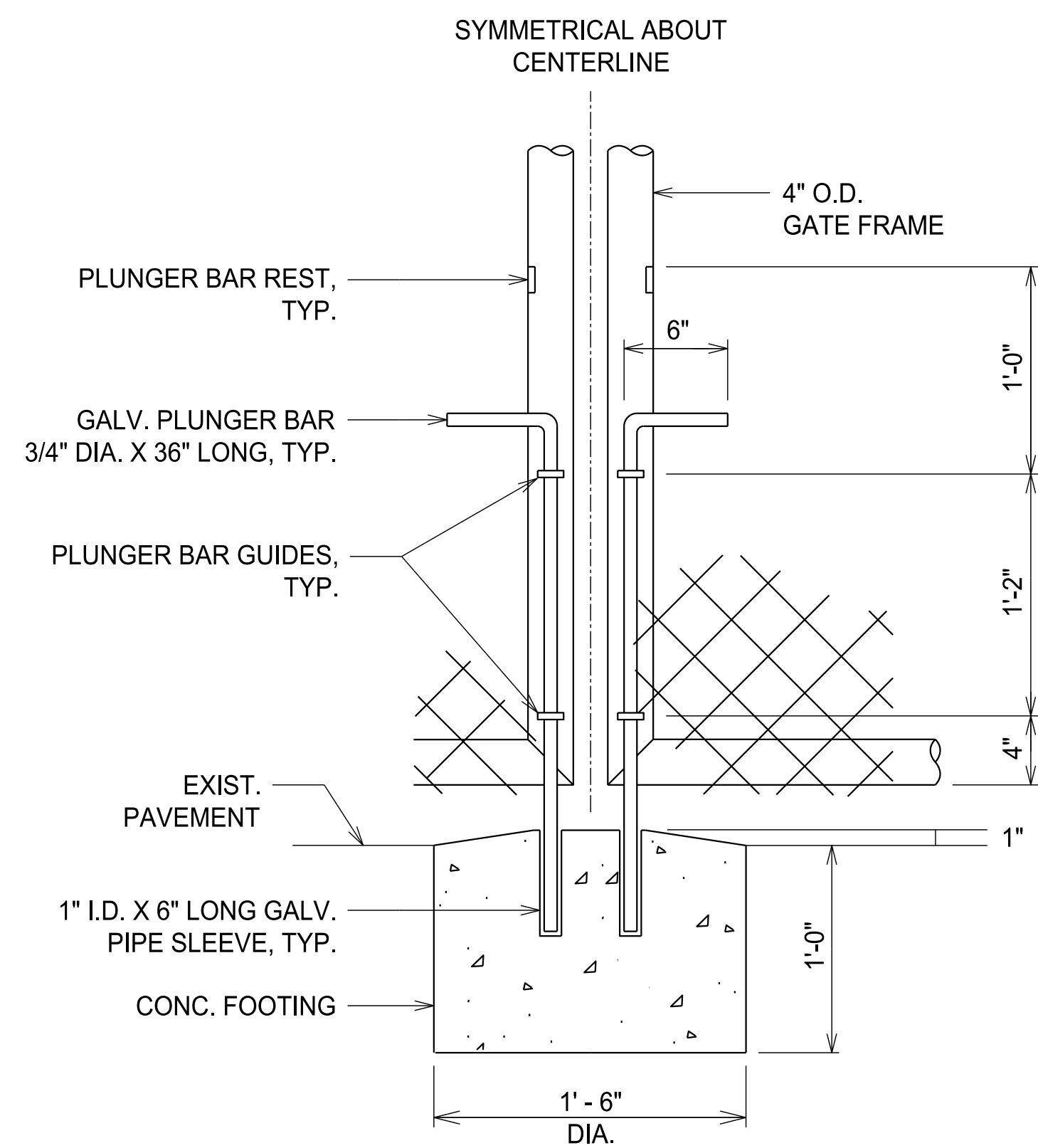
BOTTOM HINGE



ISOMETRIC

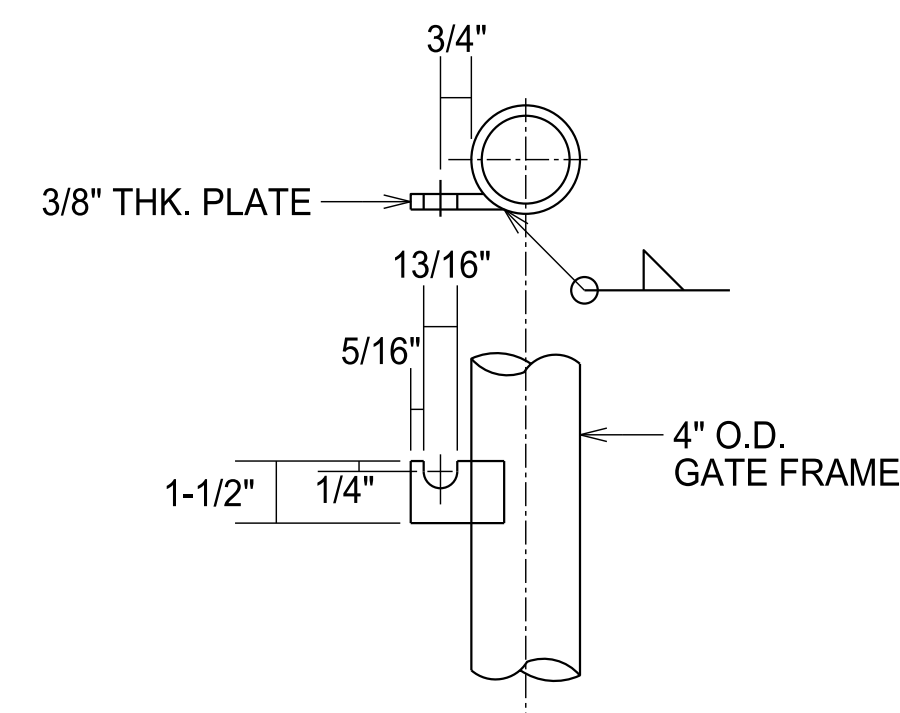
DETAIL - GATE HINGE

NOT TO SCALE



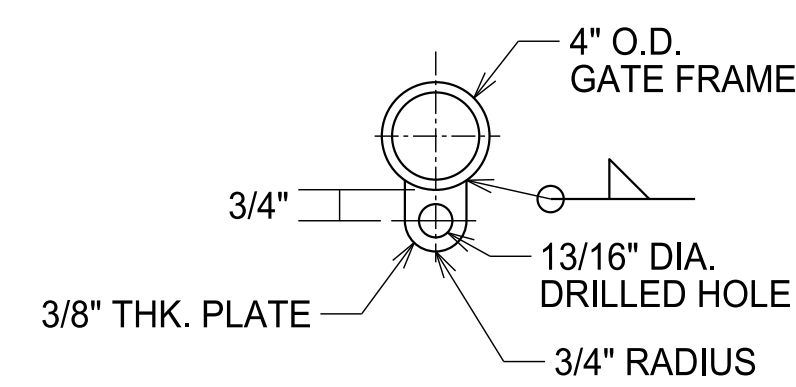
DETAIL - PLUNGER BAR

NOT TO SCALE



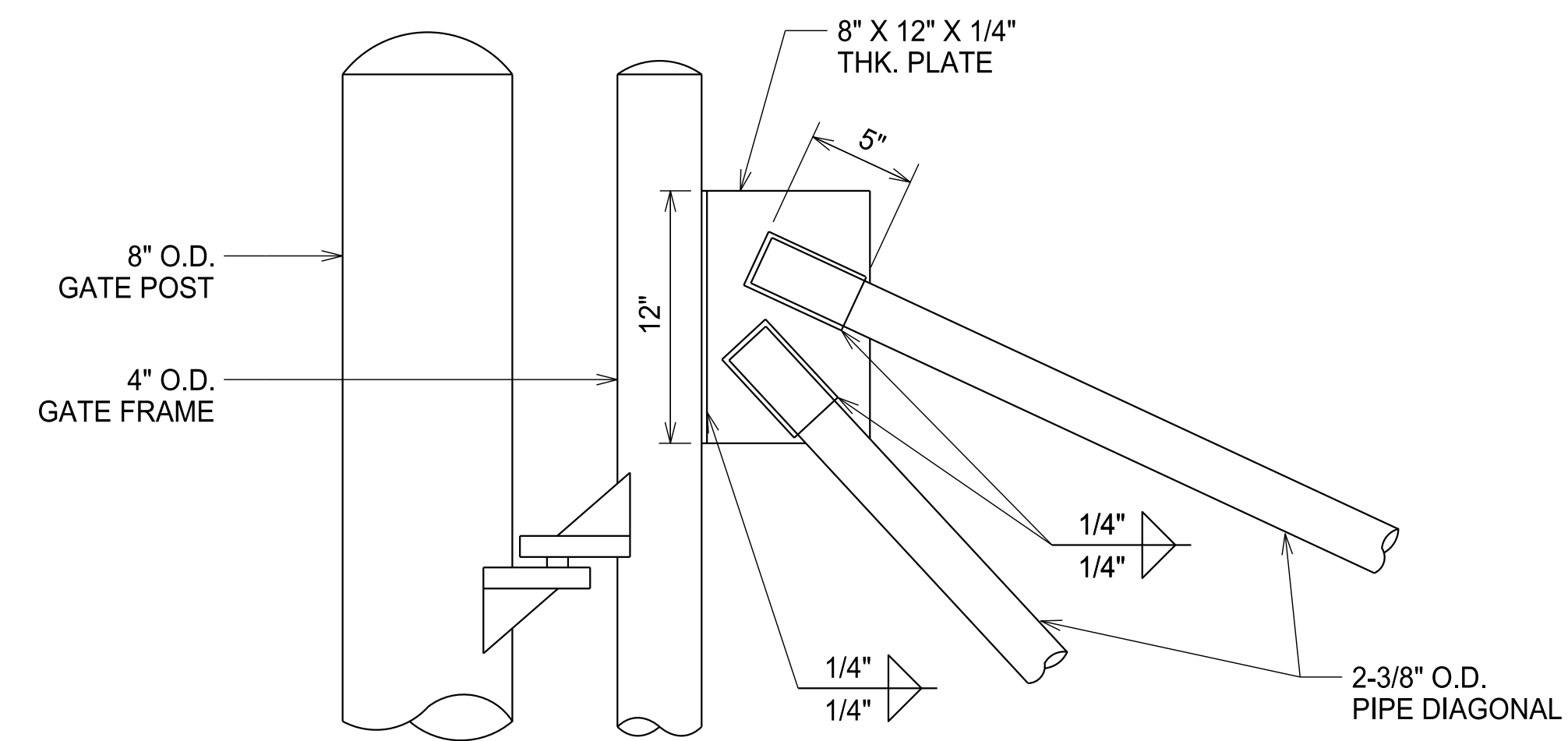
DETAIL - PLUNGER BAR REST

NOT TO SCALE



DETAIL - PLUNGER BAR GUIDE

NOT TO SCALE



DETAIL - PIPE DIAGONAL

NOT TO SCALE

REV	DATE	DESCRIPTION	BY	APPROVED
STATE OF HAWAII DEPARTMENT OF TRANSPORTATION HARBORS				
JOB TITLE FENCE AND GATE REPAIRS AT VARIOUS LOCATIONS, KAHULUI HARBOR MAUI, HAWAII				
SHEET TITLE DETAILS				
DESIGNED BY: EL				SHEET
DRAWN BY: EL				4
CHECKED BY: AF	JOB NUMBER			
DATE: MAR 2024	S30221R			
SCALE: AS SHOWN				4 OF 4 SHTS.